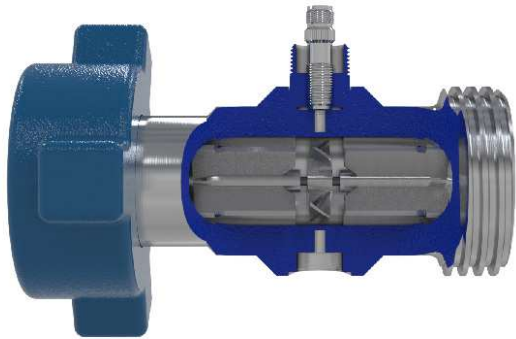
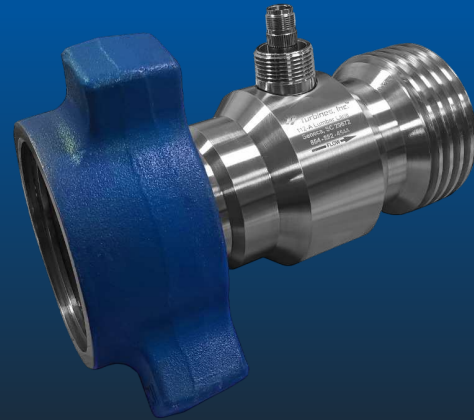


# High Pressure Turbine Flow Meter

ACCURATE AND RELIABLE HIGH PRESSURE FLOW METERING



**Turbines, Inc.** is the leader in the design and manufacture of reliable and accurate turbine flow metering equipment, electronic monitors, and accessories. All products are engineered, manufactured, and calibrated using premium quality materials by skilled tradesman with state-of-the-art equipment.

Turbines, Inc. maintains a team of dedicated engineers, technicians, and application specialists, who are on-call to assist with product/application guidance, technical assistance, and special configurations or modifications.

## Specifications

### Performance

Linearity	+/- 1% over flow range
Repeatability	+/- 0.10% over flow range
Operating Temperature	-100°F to +250°F Standard (850°F with special coil)
Operating Pressure	Up to 15,000 psi (end fitting dependent)
Flow Rate	From 15 to 600gpm

### Materials

Meter Body	A286 Stainless steel
Rotor Supports	316 Stainless steel
Meter Rotor	CD4MCu
Rotor Shaft	Tungsten carbide
Sleeve Bearings	Tungsten carbide

### Additional Information

Connections	Thread by WingNut or Thread by Thread
-------------	---------------------------------------

### Certifications

	CRN Certified, ISO 9001, NIST traceable calibration
--	---



Turbines Part Number	Meter Line Size	Flow Range GPM	Flow Range BPD	Repeatability	Linearity	Max Pressure psig
HP-TM0200L	2"	15 – 180	514 – 6000	+/- 0.10%	+/- 1.0%	15,000
HP-TM0200-SI	2"	40 – 400	1,371 – 13,714	+/- 0.10%	+/- 1.0%	15,000
HP-TM0200-TXT-SI (thread x thread)	2"	40 – 400	1,371 – 13,714	+/- 0.10%	+/- 1.0%	15,000
HP-TM0300-TXT (thread x thread)	3"	60 – 600	2,100 – 21,000	+/- 0.10%	+/- 1.0%	15,000

## Details

1. Magnetic pickup coils included at no extra charge.
2. The HP TM Series is linear and accurate over its designed operating range; premium accuracy available, consult factory.

The HP TM Series can be complemented with any of our monitors or interface modules to comprise a comprehensive system.



## Service

Our dedicated staff offers complete support and recertification for flow meters — whether our own or a competitor's brand. Our calibration services are performed by our trained technicians using the latest testing equipment.

Turbines, Inc. maintains extensive inventories in multiple locations to facilitate rapid, industry leading deliveries.

## Worldwide Support

We serve customers globally with offices in Altus, OK; Seneca, SC; Odessa, TX; Cranston, RI; and Edmonton, Alberta, Canada.

 Turbines, Inc. products are proudly made in the U.S.A.



15935 Highway 283 N.  
Altus, Oklahoma 73522, USA  
Tel: +1-580-477-3067  
[www.turbinesincorporated.com](http://www.turbinesincorporated.com)



112 Lumber Ln.  
Seneca, SC 29672 USA  
Tel: +1-864-882-4544  
[www.turbinesincorporated.com](http://www.turbinesincorporated.com)



960 South Meadow Ave.  
Odessa, TX 79761 USA  
Tel: +1-432-333-4800  
[www.turbinesodessa.com](http://www.turbinesodessa.com)



800 Wellington Avenue  
Cranston, RI 02910, USA  
Tel: +1-401-461-6366  
[www.primaryflowsignal.com](http://www.primaryflowsignal.com)



2236 80th Avenue NW,  
Edmonton, AB T6P 1N2  
Tel: 877-661-3569  
[www.pfscanada.ca](http://www.pfscanada.ca)