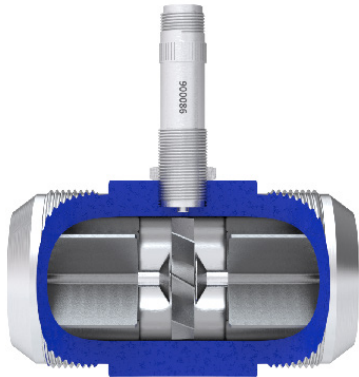


Cryogenic Turbine Flow Meter

HIGHLY ACCURATE AND RELIABLE
CRYOGENIC FLOW MEASUREMENT



Turbinex, Inc. is the leader in the design and manufacture of reliable and accurate turbine flow metering equipment, electronic monitors, and accessories. All products are engineered, manufactured, and calibrated using premium quality materials by skilled tradesman with state-of-the-art equipment. Turbinex, Inc. maintains a team of dedicated engineers, technicians, and application specialists, who are on-call to assist with product/application guidance, technical assistance, and special configurations or modifications.

Specifications	
Performance	
Linearity	+/- 0.5% over flow range
Repeatability	+/- 0.1 % over flow range
Operating Temperature	-450° F to +450° F
Materials	
Meter Body	316 Stainless steel
Rotor Supports	316 Stainless steel
Meter Rotor	Nickel 200, 17-4PH
Bearings	440C or hybrid ceramic ball bearing
Additional Information	
Full line of calibrated Retrofit Kits are available Factory refurbishment is available	
Connections	37° AN flare, flanged, NPT, wafer, or sanitary (consult factory for other options)
Certifications	
NTEP Certified, CRN Certified, ISO 9001, OIML R117, R81, MID	



Flow Meter ID (inches)	1/2"	5/8"	3/4"	1"	1 1/4"	1 1/2"	2"	3"	4"	6"	8"	10"	12"
Flow Range (gpm)	1-10	1.75 -16	2.5-30	4-60	6-93	8-130	15-225	40-650	75-1250	200-2900	330-5200	650-8000	900-12000

Details

1. Magnetic pickup coils included at no extra charge.
2. The TMC Series is linear and accurate over its designed operating range; premium accuracy available, consult factory.

The TMC Series can be complemented with any of our monitors or interface modules to comprise a comprehensive system.

Industries Served

Included but are not limited to: Industrial/Commercial Gases, Aerospace, Aviation, Defense, Food and Beverage, Medical, Agriculture/Agribusiness, Oil & Gas, Automotive, etc.



Service

Our dedicated staff offers complete support and recertification for flow meters — whether our own or a competitor's brand. Our calibration services are performed by our trained technicians using the latest testing equipment.

Turbines, Inc. maintains extensive inventories in multiple locations to facilitate rapid, industry leading deliveries.

Worldwide Support

We serve customers globally with offices in Altus, OK; Seneca, SC; Odessa, TX; Cranston, RI; and Edmonton, Alberta, Canada.



Turbines, Inc. products are proudly made in the U.S.A.



15935 Highway 283 N.
Altus, Oklahoma 73522, USA
Tel: +1-580-477-3067
www.turbinesincorporated.com



112 Lumber Ln.
Seneca, SC 29672 USA
Tel: +1-864-882-4544
www.turbinesincorporated.com



960 South Meadow Ave.
Odessa, TX 79761 USA
Tel: +1-432-333-4800
www.turbinesodessa.com



800 Wellington Avenue
Cranston, RI 02910, USA
Tel: +1-401-461-6366
www.primaryflowsignal.com



2236 80th Avenue NW,
Edmonton, AB T6P 1N2
Tel: 877-661-3569
www.pfscanada.com