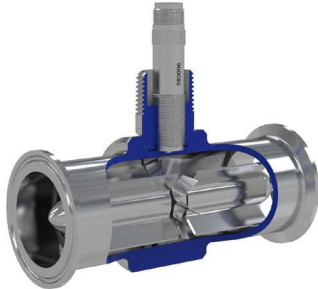


# 3A TURBINE FLOWMETER

SANITARY TURBINE FLOWMETER FOR LIQUID MEASUREMENT



**Turbines, Inc.** is the leader in the design and manufacture of reliable and accurate turbine flow metering equipment, electronic monitors, and accessories. All products are engineered, manufactured, and calibrated using premium quality materials by skilled tradesman with state-of-the-art equipment.

Turbines, Inc. maintains a team of dedicated engineers, technicians, and application specialists, who are on-call to assist with product/application guidance, technical assistance, and special configurations or modifications.

## Specifications

Flow Meter ID (Inches)	Flow Range (GPM)
1/2"	1.25-10
5/8"	1.75-16
3/4"	2.5-30
1"	4-60
1-1/4"	6-93
1-1/2"	8-130
2"	15-225
3"	40-650

Linearity	+/- 0.5% over standard flow range
Repeatability	+/- 0.1% over standard flow range
Operating Temperature	-100°F to 450°F (consult factory for other options)
Flow Rate	From 1.25 to 650 GPM
Cleaning Methods	CIP/SIP/COP/SOP
Surface Finish	Minimum 32 µin Ra
<b>Materials</b>	
Meter Body	316 Stainless Steel
Rotor	17-4 PH Stainless Steel
Bearings	Hard Carbon Composite, Rulon 123
<b>Additional Information</b>	
Connections	Sanitary
Certifications	3A Sanitary Standards 28-04, CRN Certified, NIST

**Model Number Designation for 3A Turbine Meter and 3A Rebuild Kit**

**TMS/TKSA0100X2-3A-G-2HUB**

<b>Style of Turbine Flow Meter</b>	
TMSA	Sanitary Style Turbine Meter
TKSA	Sanitary Style Turbine Meter Rebuild Kit
<b>Turbine Flow Meter Size</b>	
0050	1/2" (1" inlet diameter, 1.984" flange diameter standard)
0058	5/8" (1" inlet diameter, 1.984" flange diameter standard)
0075	3/4" (1" inlet diameter, 1.984" flange diameter standard)
0100	1" (1" inlet diameter, 1.984" flange diameter standard)
0125	1 1/4" (1 1/2" inlet diameter, 1.984" flange diameter standard)
0150	1 1/2" (1 1/2" inlet diameter, 1.984" flange diameter standard)
0200	2" (2" inlet diameter, 2.516" flange diameter standard)
0300	3" (3" inlet diameter, 3.579" flange diameter standard)
<b>Optional End Fitting Size</b>	
Blank	Standard End Fitting
X1/2	1/2" inlet diameter, 0.984" diameter flange
X3/4	3/4" inlet diameter, 0.984" diameter flange
X1 1/4	1 1/4" inlet diameter, 1.984" diameter flange
X1 1/2	1 1/2" inlet diameter, 1.984" diameter flange
X2	2" inlet diameter, 2.516" diameter flange
X3	3" inlet diameter, 3.579" diameter flange
<b>3A Compliant Materials, Surface Finish, etc</b>	
Blank	non-3A Sanitary Standard compliant
3A	3A Sanitary Standard compliant
<b>Bearing Material</b>	
G	Carbon Graphite M100
R	Rulon® 123
<b>Pickup Coil</b>	
Blank	Standard Single Magnetic Coil
2Hub	Two Magnetic Pickup Coils
PAI	Single Magnetic Coil w/ Integrated Pulse Amplifier
2PAI	Two Magnetic Coils w/ Integrated Pulse Amplifiers

**Service**

Our dedicated staff offers complete support and recertification for flow meters — whether our own or a competitor's brand. Our calibration services are performed by our trained technicians using the latest testing equipment.

Turbines, Inc. maintains extensive inventories in multiple locations to facilitate rapid, industry leading deliveries.

**Worldwide Support**

We serve customers globally with offices in Altus, OK; Seneca, SC; Odessa, TX; Cranston, RI; and Edmonton, Alberta, Canada.



**Turbines, Inc. products are proudly made in the U.S.A.**



15935 Highway 283 N.  
Altus, Oklahoma 73522, USA  
Tel: +1-580-477-3067  
[www.turbinesincorporated.com](http://www.turbinesincorporated.com)



112 Lumber Ln.  
Seneca, SC 29672 USA  
Tel: +1-864-882-4544  
[www.turbinesincorporated.com](http://www.turbinesincorporated.com)



960 South Meadow Ave.  
Odessa, TX 79761 USA  
Tel: +1-432-333-4800  
[www.turbinesodessa.com](http://www.turbinesodessa.com)



800 Wellington Avenue  
Cranston, RI 02910, USA  
Tel: +1-401-461-6366  
[www.primaryflowsignal.com](http://www.primaryflowsignal.com)



2236 80th Avenue NW,  
Edmonton, AB T6P 1N2  
Tel: 877-661-3569  
[www.pfscanada.ca](http://www.pfscanada.ca)